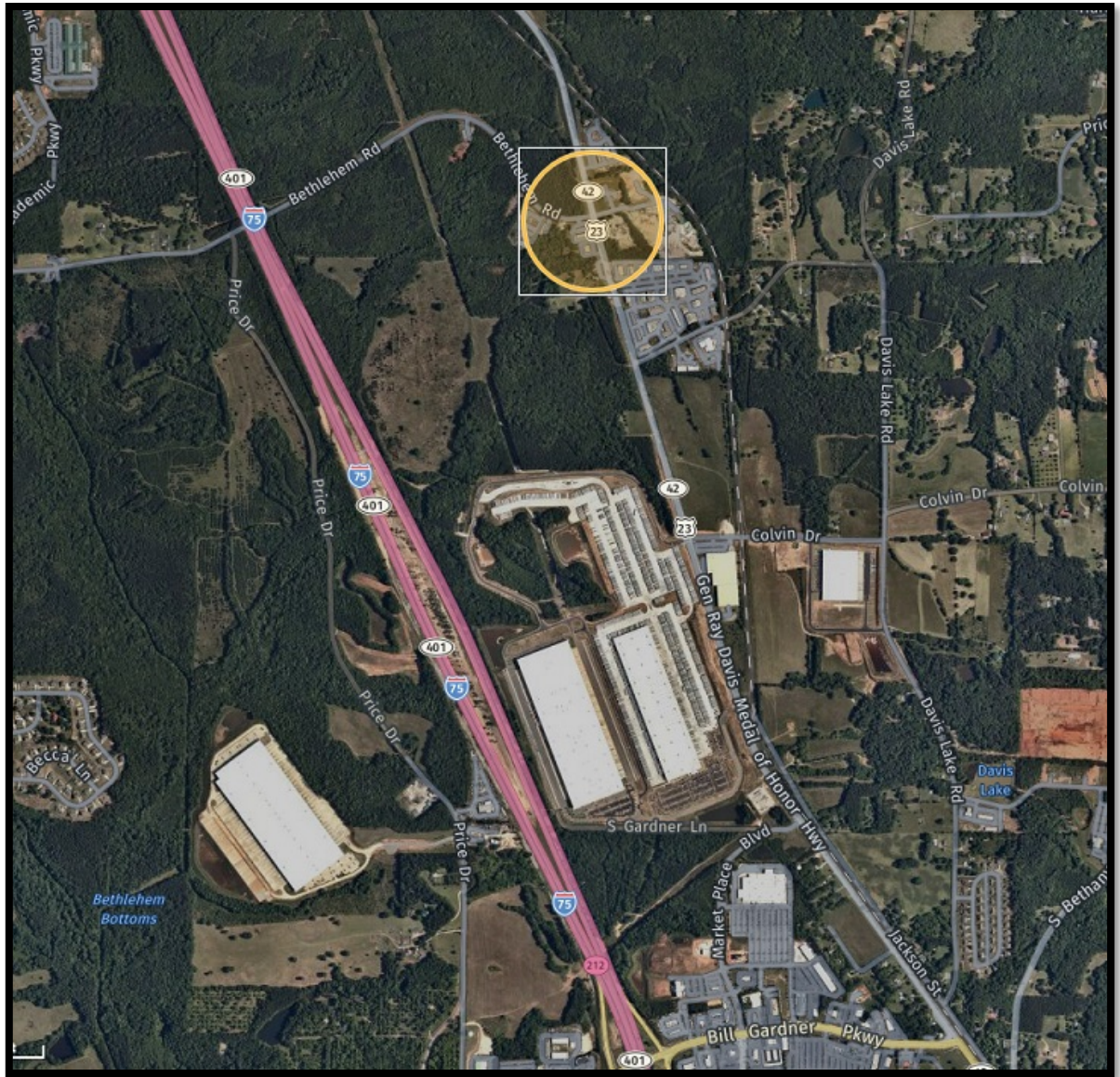




LOCUST GROVE EST. 1893



Signal Study + Design for SR 42 @ Bethlehem Road

Project Description

The Transportation Special Purpose Local Option Sales Tax (T-SPLOST) for the City of Locust Grove propose to perform the traffic analysis for a signal at SR 42 and Bethlehem Road – at least for a temporary basis while the new interchange is configured. The area is highlighted in Orange at the top of this image.

Project costs will include the ICE Interchange Analysis per Georgia DOT requirements along with additional design work to move into other funding sources for traffic safety and mobility

Project Cost - \$200,000



For more information on T-SPLOST in Locust Grove and Henry County

www.HenryTSPLOST.com